



In This Edition

Cost of Living Index

Cost of Living Index

Sales Tax Collections

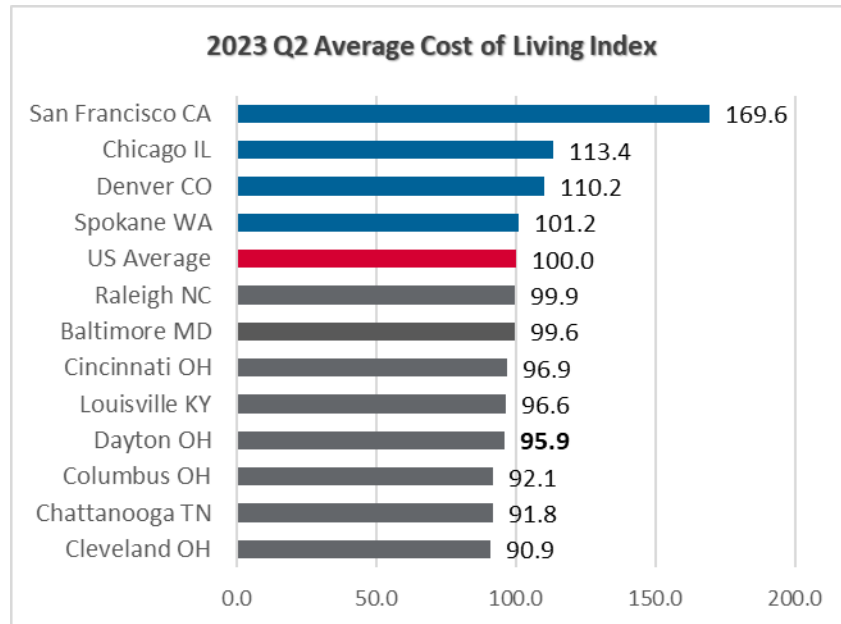
Consumer Price Index

U.S. Manufacturing, Retailer, and Merchant Wholesalers Sales

Residential Home Sales

Participation Rates

Unemployment Rates



Source: Council for Community and Economic Research (C2ER), ACCRA Cost of Living Index
This is the most current data available at the time of this report.

Sales Tax Collection

County	Current Rate	June 2023	June 2022	12 Mos Change	YTD 2023	YTD 2022	YTD Change
Auglaize	1.50%	\$1,170,683	\$992,845	17.91%	\$6,286,985	\$5,776,539	8.8%
Butler	0.75%	\$4,920,063	\$4,907,832	0.25%	\$29,190,384	\$27,719,985	5.3%
Champaign	1.50%	\$483,279	\$623,749	-22.52%	\$3,575,370	\$3,459,891	3.3%
Clark	1.50%	\$2,715,789	\$2,697,110	0.69%	\$16,093,987	\$15,538,302	3.6%
Clinton	1.50%	\$1,119,827	\$1,086,855	3.03%	\$6,516,012	\$6,156,411	5.8%
Darke	1.50%	\$1,010,935	\$975,405	3.64%	\$5,903,696	\$5,648,026	4.5%
Fayette	1.50%	\$814,378	\$850,487	-4.25%	\$4,796,550	\$4,548,669	5.4%
Greene	1.00%	\$3,139,375	\$3,226,104	-2.69%	\$18,220,673	\$17,362,502	4.9%
Mercer	1.50%	\$1,029,509	\$1,035,412	-0.57%	\$5,757,284	\$5,559,330	3.6%
Miami	1.25%	\$2,019,742	\$2,105,637	-4.08%	\$11,909,528	\$11,743,262	1.4%
Montgomery	1.25%	\$10,490,978	\$10,748,624	-2.40%	\$60,837,924	\$60,258,610	1.0%
Preble	1.50%	\$662,677	\$687,411	-3.60%	\$3,882,281	\$3,794,322	2.3%
Shelby	1.50%	\$1,000,673	\$1,070,738	-6.54%	\$6,140,357	\$6,048,193	1.5%
Warren	1.00%	\$4,841,857	\$5,964,325	-18.82%	\$27,985,050	\$32,747,225	-14.5%
Region Total		\$35,419,766	\$36,972,534	-4.20%	\$207,096,082	\$206,361,267	0.36%

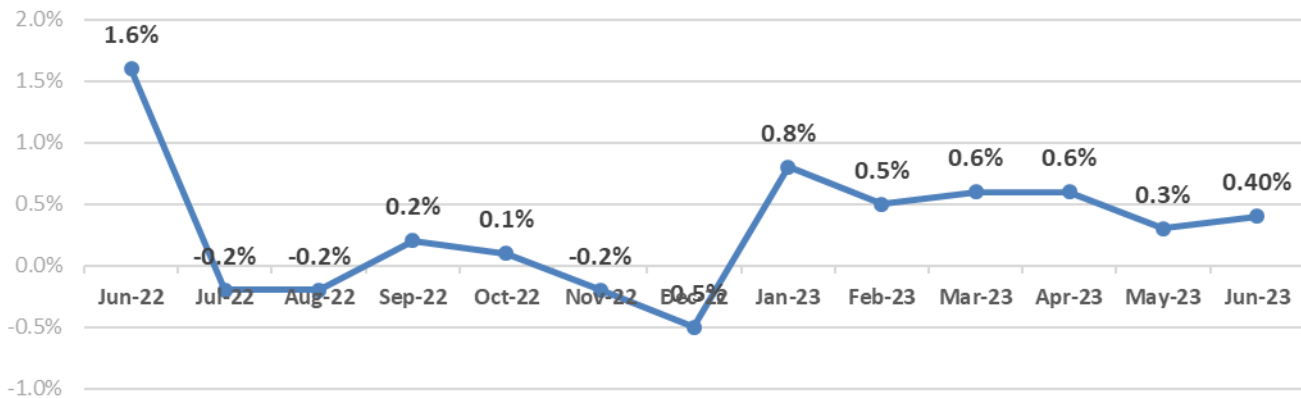
Source: https://tax.ohio.gov/wps/portal/gov/tax/researcher/tax-analysis/tax-data-series/publications_tds_sales

Consumer Price Index

June 2023 % Monthly change	0.4%
CPI over the last 12 months avg.	2.4%

Statistics for the Dayton MSA are no longer available. Based on Midwest region B/C MSA Population 50,000- 1,500,000.
 Source: http://www.bls.gov/regions/mountain-plains/news-release/consumerpriceindex_midwest.htm#chart1

Consumer Price Index



Statistics for the Dayton MSA are no longer available. Based on Midwest region B/C MSA Population 50,000- 1,500,000.
 Source: http://www.bls.gov/regions/mountain-plains/news-release/consumerpriceindex_midwest.htm#chart1

Estimated Monthly Sales for Manufacturers, Retailers, and Merchant Wholesalers

Seasonally Adjusted

(In millions of dollars)	June 2023	May 2023	June 2022	% Change
Total Business	1,818,637	1,821,163	1,877,083	-2.98%
Manufacturing	573,925	573,181	589,257	-2.73%
Retail	601,433	599,958	598,405	0.26%
Merchant Wholesale	643,279	648,024	689,421	-6.00%

Note: Adjusted for seasonal variations and, in the case of sales, for trading-day differences and holiday variations. For complete methodology, refer to the source.

Source: US Dept. of Commerce, US Census Bureau, Economic Indicators, Manufacturing and Trade Inventories and Sales

Residential Home Sales

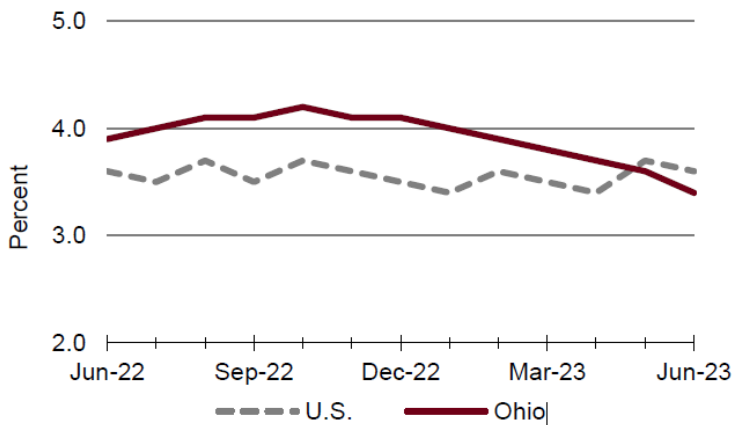
	June 2023	June 2022	%Change	YTD '23	YTD '22	%Change
# of Homes Sold	1,381	1,596	-25.62%	6,642	7,801	-14.86%
Total Home Sales	\$370,750,816	\$409,132,881	-9.38%	\$1,662,739,504	\$1,877,719,710	-11.45%
Average Sale Price (\$)	\$268,465	\$256,349	4.73%	\$250,337	\$240,702	4.00%

Source: Dayton Area Board of Realtors, Dayton Area Home Sales

Labor Force Participation Rates

Seasonally adjusted

	June 2023	May 2023	June 2022	12 Month Average
Ohio	62.1%	62.1%	62.0%	61.7%
United States	62.6%	62.6%	62.2%	62.4%

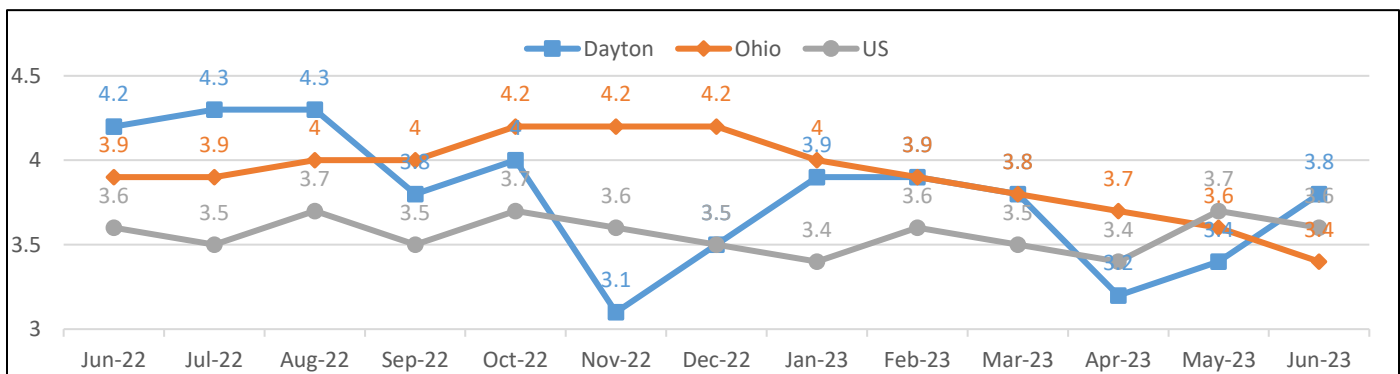


Source: Ohio Department of Job and Family Services <https://jfs.ohio.gov/ocomm/index.stm>
 Labor force participation rates are not published for metropolitan areas

Unemployment Rates

Not seasonally adjusted

	June 2023	June 2022	12-month Average
Dayton MSA	3.8%	4.2%	3.78%
Ohio	3.4%	3.9%	3.9%
U.S	3.6%	3.6%	3.56%



Source: U.S. Bureau of Labor Statistics, Local Area Unemployment Statistics (LAUS), Labor Force Statistics including the National Unemployment Rate, www.bls.gov