

**In This Edition**

Cost of Living Index

**Cost of Living Index**

Sales Tax Collections

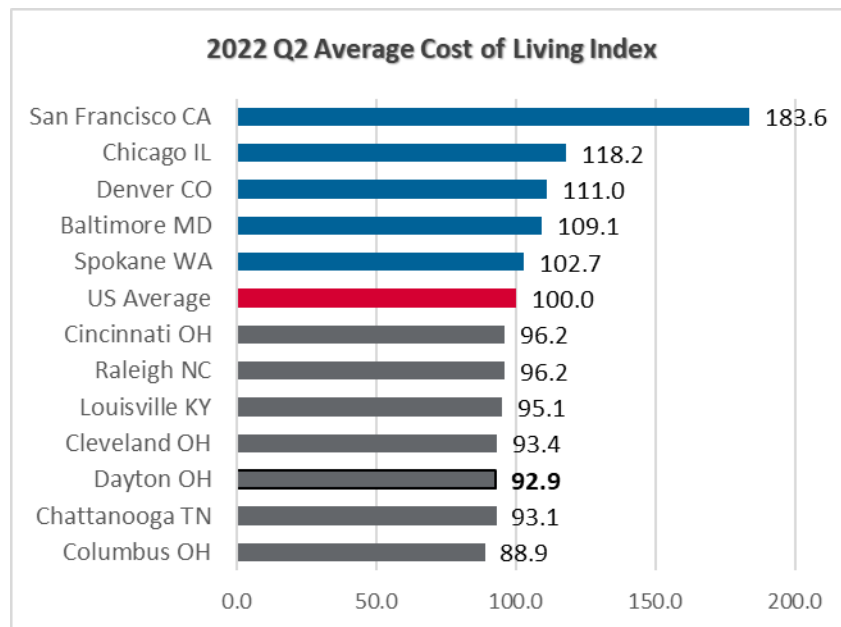
Consumer Price Index

U.S. Manufacturing, Retailer, and Merchant Wholesalers Sales

Residential Home Sales

Participation Rates

Unemployment Rates



Source: Council for Community and Economic Research (C2ER), ACCRA Cost of Living Index  
This is the most current data available at the time of this report.

**Sales Tax Collection**

County	Current Rate	July 2022	July 2021	12 Mos Change	YTD 2022	YTD 2021	YTD Change
<b>Butler</b>	0.75%	\$4,975,874	\$4,948,340	0.56%	\$32,695,859	\$31,243,529	4.6%
<b>Clark</b>	1.50%	\$2,785,984	\$2,827,009	-1.45%	\$18,324,286	\$18,449,590	-0.7%
<b>Darke</b>	1.50%	\$1,013,279	\$974,530	3.98%	\$6,661,305	\$6,520,814	2.2%
<b>Greene</b>	1.00%	\$3,098,219	\$3,084,330	0.45%	\$20,460,721	\$19,662,420	4.1%
<b>Miami</b>	1.25%	\$2,062,555	\$2,021,619	2.02%	\$13,805,817	\$13,554,249	1.9%
<b>Montgomery</b>	1.25%	\$10,210,550	\$10,017,759	1.92%	\$70,469,160	\$67,247,199	4.8%
<b>Preble</b>	1.50%	\$670,797	\$629,329	6.59%	\$4,465,118	\$4,319,188	3.4%
<b>Warren</b>	1.25%	\$6,313,794	\$6,116,327	3.23%	\$39,061,019	\$36,802,281	6.1%
<b>Region Total</b>		<b>\$31,131,052</b>	<b>\$30,619,244</b>	<b>1.67%</b>	<b>\$205,943,285</b>	<b>\$197,799,270</b>	<b>4.12%</b>

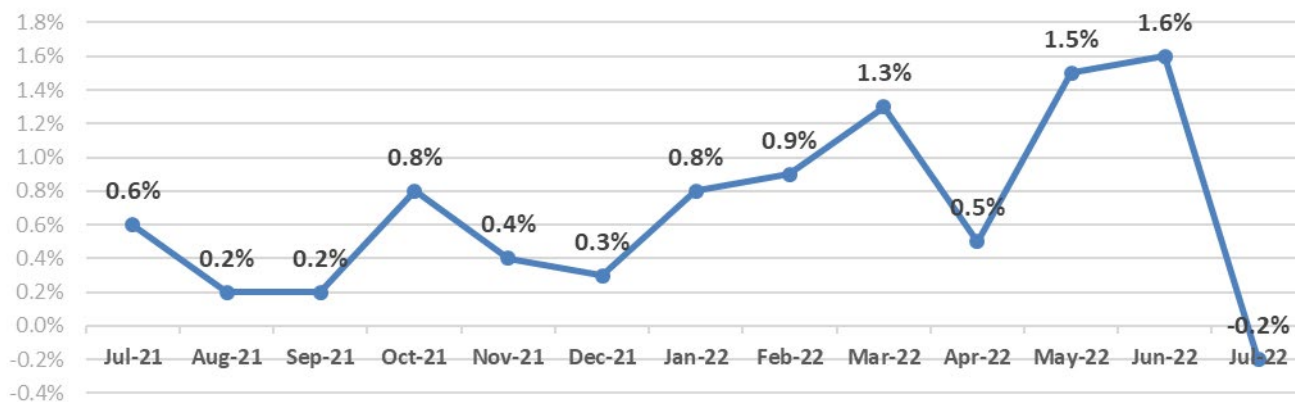
Source: [https://tax.ohio.gov/wps/portal/gov/tax/researcher/tax-analysis/tax-data-series/publications\\_tds\\_sales](https://tax.ohio.gov/wps/portal/gov/tax/researcher/tax-analysis/tax-data-series/publications_tds_sales)

## Consumer Price Index

<b>July 2022 % Monthly change</b>	-0.2%
<b>CPI over the last 12 months avg.</b>	8.6%

Statistics for the Dayton MSA are no longer available. Based on Midwest region B/C MSA Population 50,000- 1,500,000.  
**Source:** [http://www.bls.gov/regions/mountain-plains/news-release/consumerpriceindex\\_midwest.htm#chart1](http://www.bls.gov/regions/mountain-plains/news-release/consumerpriceindex_midwest.htm#chart1)

## Consumer Price Index



Statistics for the Dayton MSA are no longer available. Based on Midwest region B/C MSA Population 50,000- 1,500,000.  
**Source:** [http://www.bls.gov/regions/mountain-plains/news-release/consumerpriceindex\\_midwest.htm#chart1](http://www.bls.gov/regions/mountain-plains/news-release/consumerpriceindex_midwest.htm#chart1)

## Estimated Monthly Sales for Manufacturers, Retailers, and Merchant Wholesalers

Not Seasonally Adjusted

(In millions of dollars)	<b>July 2022</b>	<b>June 2022</b>	<b>July 2021</b>	<b>% Change</b>
<b>Total Business</b>	\$1,838,499	\$1,856,573	\$1,623,099	14.38%
<b>Manufacturing</b>	\$545,282	\$550,206	\$480,651	14.47%
<b>Retail</b>	\$595,894	\$598,145	\$553,044	8.16%
<b>Merchant Wholesale</b>	\$697,323	\$708,222	\$589,404	20.16%

**Note:** Adjusted for seasonal variations and, in the case of sales, for trading-day differences and holiday variations. For complete methodology, refer to the source.

**Source:** US Dept. of Commerce, US Census Bureau, Economic Indicators, Manufacturing and Trade Inventories and Sales

## Residential Home Sales

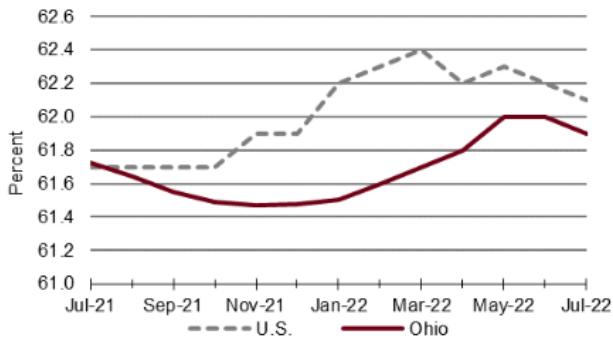
	<b>July 2022</b>	<b>July 2021</b>	<b>%Change</b>	<b>YTD '22</b>	<b>YTD '21</b>	<b>%Change</b>
<b>Number of Homes Sold</b>	1,551	1,711	-9.35%	9,395	9,705	-3.19%
<b>Total Home Sales</b>	\$388,099,861	\$385,050,902	0.79%	\$2,275,943,219	\$2,107,163,291	8.01%
<b>Average Sale Price (\$)</b>	\$250,226	\$225,044	11.19%	\$205,000	\$185,000	10.81%

**Source:** Dayton Area Board of Realtors, Dayton Area Home Sales

## Labor Force Participation Rates

Seasonally adjusted

	July 2022	June 2022	July 2021	12 Month Average
<b>Ohio</b>	61.9%	62.0%	61.7%	61.5%
<b>United States</b>	62.1%	62.2%	61.7%	62.0%

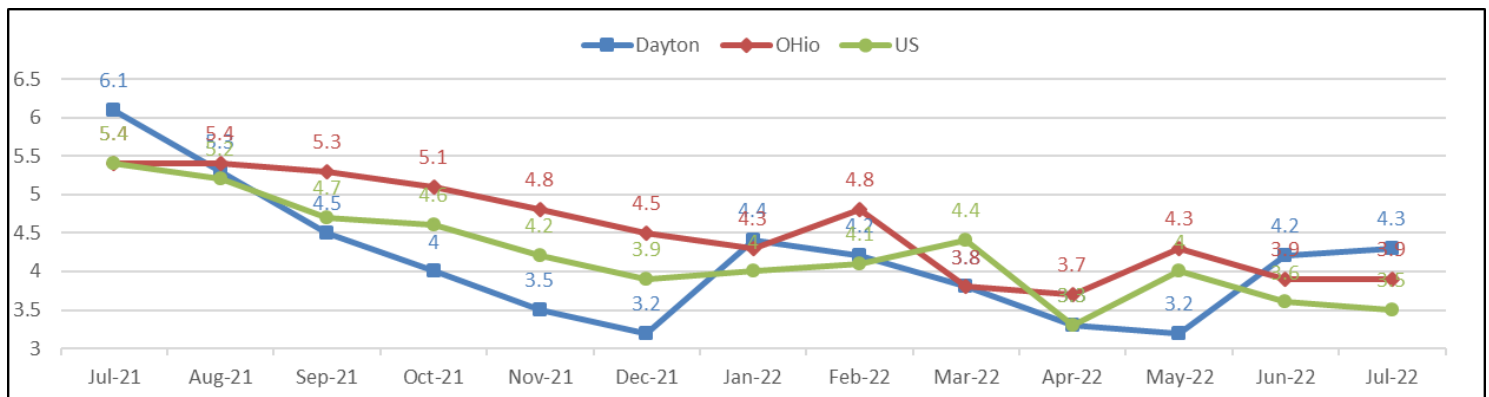


Source: Ohio Department of Job and Family Services <https://jfs.ohio.gov/ocomm/index.stm>  
 Labor force participation rates are not published for metropolitan areas

## Unemployment Rates

Not seasonally adjusted

	July 2022	July 2021	12-month Average
<b>Dayton MSA</b>	4.3%	6.3%	4.15%
<b>Ohio</b>	3.9%	5.2%	4.6%
<b>U.S.</b>	3.6%	5.9%	4.22%



Source: U.S. Bureau of Labor Statistics, Local Area Unemployment Statistics (LAUS), Labor Force Statistics including the National Unemployment Rate, [www.bls.gov](http://www.bls.gov)